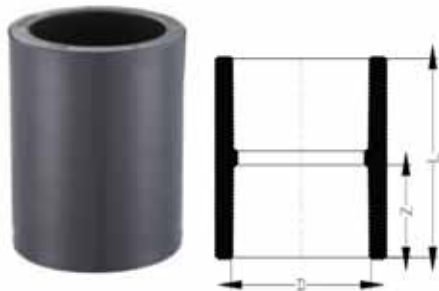
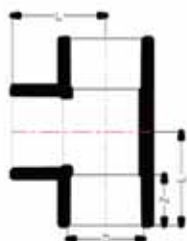


- 直接頭 Coupling (SXS)
(829)



Nominal Size	Socket Type D	Structural Diameter	
		Z	L
1/2"	21.34	24.0	50.2
3/4"	26.67	27.0	56.5
1"	33.40	30.0	62.5
1-1/4"	42.16	33.0	68.5
1-1/2"	48.26	36.0	74.5
2"	60.32	39.0	80.5
2-1/2"	73.02	46.0	97.0
3"	88.90	49.0	103.0
4"	114.30	59.0	123.0
5"	141.80	69.0	145.0
6"	168.28	76.8	159.5
8"	219.84	104.60	220.0
10"	273.81	130.0	270.0
12"	324.61	155.0	320.0

- 正三通 Equal Tee (SxSxS)
(801)



Nominal Size	Socket Type D	Structural Diameter	
		Z	L
1/2"	21.34	24.0	36.5
3/4"	26.67	27.0	42.5
1"	33.40	30.0	49.5
1-1/4"	42.16	33.0	56.0
1-1/2"	48.26	36.0	63.0
2"	60.32	39.0	73.5
2-1/2"	73.02	46.0	86.5
3"	88.90	49.0	100.0
4"	114.30	59.0	124.0
5"	141.80	69.0	143.0
6"	168.28	76.8	159.5
8"	219.84	104.60	219.6
10"	273.81	130.00	275.0
12"	324.61	155.0	330.0

● 90°彎頭Elbow(SxS)
(806)



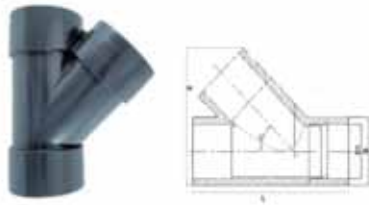
Nominal Size	Socket Type D	Structural Diameter	
		Z	L
1/2"	21.34	24.0	36.5
3/4"	26.67	27.0	42.5
1"	33.40	30.0	49.5
1-1/4"	42.16	33.0	56.0
1-1/2"	48.26	36.0	63.0
2"	60.32	39.0	73.05
2-1/2"	73.02	46.0	86.5
3"	88.90	49.0	100.0
4"	114.30	59.0	124.0
5"	141.80	68.0	143.0
6"	168.28	76.8	159.5
8"	219.84	101.6	222.25
10"	273.81	141.1	288.73
12"	324.61	168.0	339.73

● 45°彎頭Elbow(SxS)
(817)



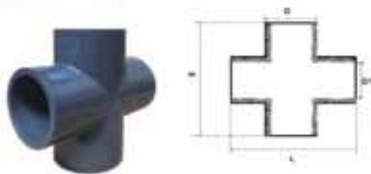
Nominal Size	Socket Type D	Structural Diameter	
		Z	L
1/2"	21.34	24.0	30.5
3/4"	26.67	27.0	34.5
1"	33.40	30.0	39.5
1-1/4"	42.16	33.0	45.0
1-1/2"	48.26	36.0	49.0
2"	60.32	39.0	54.5
2-1/2"	73.02	46.0	66.0
3"	88.90	49.0	72.0
4"	114.30	59.0	88.0
5"	141.80	70.0	102.76
6"	168.28	76.8	159.5
8"	219.84	104.6	160.34
10"	273.81	130.0	223.84
12"	324.61	155.2	265.11

- Y 三通 WYE TEE (SxSxS)
(875)



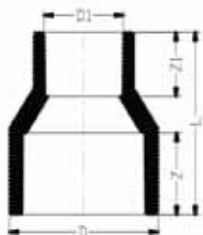
Nominal Size	Socket Type		Structural Diameter	
	D1	D	L	H
1 1/2"	48.26	61	150	122
2"	60.32	75	181	148
2 1/2"	73.02	89	208	175
3"	88.90	106	237	205
4"	114.30	132	289	255
6"	168.28	192	415	375

- 四通 CROSS (SxSxSxS)
(820)



Nominal Size	Socket Type		Structural Diameter	
	D1	D	L	H
2"	60.32	76	143	143
2 1/2"	73.02	89	168	168

- 大小頭長 Reducing Coupling (SxS)
(829)



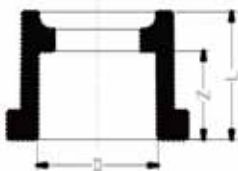
Nominal Size	Socket Type			Structural Diameter	
	D1	Z	Z1	D	L
3/4"x1/2"	21.34	27.0	24.0	26.67	60.0
1"x1/2"	21.34	30.0	24.0	33.40	63.0
1"x3/4"	26.67	30.0	27.0	33.40	67.5
1-1/4"x3/4"	26.67	33.0	27.0	42.16	75.0
1-1/4"x1"	33.40	33.0	30.0	42.16	69.0
1-1/2"x1"	33.40	36.0	30.0	48.26	77.0
1-1/2"x1-1/4"	42.16	36.0	33.0	48.26	83.5
2"x1-1/4"	42.16	39.0	33.0	60.30	89.0
2"x1-1/2"	48.26	39.0	36.0	60.30	94.0
2-1/2"x1-1/2"	48.26	46.0	36.0	73.02	99.0
2-1/2"x2"	60.32	46.0	39.0	73.02	102.0
3"x2"	60.32	49.0	39.0	88.90	106.5
3"x2-1/2"	73.02	49.0	46.0	88.90	115.5
4"x2-1/2"	73.02	59.0	46.0	114.30	124.5
4"x3"	88.90	59.0	49.0	114.30	130.0
6"x4"	114.30	76.8	57.5	168.28	165.0

- 異三通 Red Tee (SxSxS)
(801)



Nominal Size	Socket Type			Structural Diameter		
	D	D1	Z	L1	L	Z1
3/4"x1/2"	26.67	21.34	27.0	39.0	39.5	24.0
1"x1/2"	33.40	21.34	30.0	42.0	42.5	24.0
1"x3/4"	33.40	26.67	30.0	45.5	45.5	27.0
1-1/4"x3/4"	42.16	26.67	33.0	50.0	48.5	27.0
1-1/4"x1"	42.16	33.40	33.0	53.0	51.5	30.0
1-1/2"x1/2"	48.26	21.34	36.0	48.5	48.3	22.5
1-1/2"x3/4"	48.26	26.67	36.0	52.0	51.0	26.0
1-1/2"x1"	48.26	33.40	36.0	57.5	56.0	30.0
1-1/2"x1-1/4"	48.26	42.16	36.0	61.0	61.0	33.0
2"x1/2"	60.30	21.34	29.5	54.4	51.3	22.5
2"x3/4"	60.30	26.67	38.5	58.0	54.0	26.0
2"x1"	60.30	33.40	38.5	61.0	57.3	29.0
2"x1-1/4"	60.30	42.16	39.0	67.0	64.0	33.0
2"x1-1/2"	60.32	48.26	39.0	70.0	64.0	36.0
2-1/2"x1-1/2"	73.02	48.26	46.0	76.5	74.0	36.0
2-1/2"x2"	73.02	60.32	46.0	79.5	80.0	39.0
3"x2"	88.90	60.32	49.0	87.5	83.0	39.0
3"x2-1/2"	88.90	73.02	49.0	107.0	89.5	46.0
4"x2"	114.30	60.32	57.5	96.8	90.4	38.5
4"x2-1/2"	114.30	73.02	59.0	107.0	99.5	46.0
4"x3"	114.30	88.90	59.0	110.0	107.5	49.0
6"x4"	168.28	114.30	76.8	144.3	138.1	57.5

- 異徑接頭 (卜申) Reducing Bushing(SXS)
(837)



Nominal Size	Socket Type D	Structural Diameter	
		Z	L
3/4"x1/2"	26.67	24.0	34.0
1"x1/2"	33.40	24.0	36.5
1"x3/4"	33.40	27.0	37.0
1-1/4"x1"	33.40	30.0	40.0
1-1/2"x1/2"	48.26	24.22	44.45
1-1/2"x3/4"	48.26	27.40	44.45
1-1/2"x1"	48.26	30.58	44.45
1-1/2"x1-1/4"	48.26	36.0	46.0
2"x1/2"	60.32	24.22	44.45
2"x3/4"	60.32	27.40	47.62
2"x1"	60.32	30.58	47.62
2"x1-1/2"	60.32	39.0	53.0
2-1/2"x1-1/2"	73.02	37.93	68.74
2-1/2"x2"	73.02	46.0	61.0
3"x1-1/2"	88.90	37.93	58.74
3"x2"	88.90	41.10	58.74
3"x2-1/2"	88.90	47.45	58.74
4"x2"	114.30	41.10	66.68
4"x3"	88.9	49.0	66.0
5"x4"	141.81	60.15	84.0
6"x3"	168.28	50.0	101.0
6"x4"	168.28	57.5	85.3
6"x5"	168.28	69.66	90.0
8"x6"	219.10	79.0	125.41
10"x6"	173.05	79.0	163.51
10"x8"	273.05	105.0	163.51
12"x8"	219.10	105.0	176.21
12"x10"	219.10	130.0	176.21

- 管帽 Cap (S)
(847)



Nominal Size	Socket Type		Structural Diameter	
	D	Z	L	
1/2"	21.34	24.0	34.0	
3/4"	26.67	27.0	37.0	
1"	33.40	30.0	40.0	
1-1/4"	42.16	33.0	43.0	
1-1/2"	48.26	36.0	46.0	
2"	60.32	39.0	53.0	
2-1/2"	73.02	46.0	61.0	
3"	88.90	49.0	66.0	
4"	114.30	59.0	67.5	
5"	141.81	69.0	79.0	
6"	168.28	76.8	159.5	
8"	219.84	104.6	161.93	
10"	273.82	135.0	168.75	
12"	324.61	160.0	184.15	

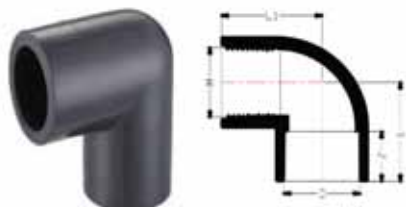
- 內牙接頭 (SxNPT) Female Adaptor
(835)



Nominal Size	Socket Type		Structural Diameter	
	D	Z	M (NPT)	L
1/2"	21.34	24.0	14	50.5
3/4"	26.67	27.0	14	56.5
1"	33.40	30.0	11.5	62.5
1-1/4"	42.16	33.0	11.5	68.5
1-1/2"	48.26	36.0	11.5	74.5
2"	60.32	39.0	11.5	80.5
2-1/2"	73.02	46.0	8	97.0
3"	88.90	49.0	8	103.0
4"	114.30	59.0	8	123.0

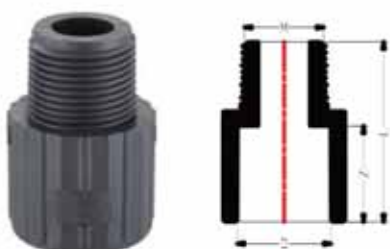
UPVC SCH40/80 PIPING SYSTEM

- 龍口彎 Faucet Elbows (SXNPT)
(807)



Nominal Size	Socket Type			Structural Diameter	
	D	Z	M (NPT)	L	L1
1/2"	29.7	24.0	14	36.4	36.4
3/4"	35.4	27.0	14	42.7	42.7
1"	43.2	30.0	11.5	49.1	49.1

- 外牙接頭 (SxNPT) Male Adaptor
(836)



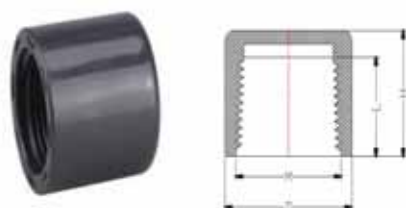
Nominal Size	Socket Type			Structural Diameter	
	D	Z	M (NPT)	L	L1
1/2"	29.7	24.0	14	36.4	36.0
3/4"	35.4	27.0	14	42.7	42.0
1"	43.2	30.0	11.5	49.1	49.0

- 內牙三通 RED. Tee (SxNPTXS)
(802)



Nominal Size	Socket Type			Structural Diameter	
	D	Z	M (NPT)	L	L1
3/4"x1/2"	29.7	24.0	14	36.5	36.5
1"x1/2"	35.4	27.0	14	42.0	42.0
1"x3/4"	43.2	30.0	14	48.0	48.0

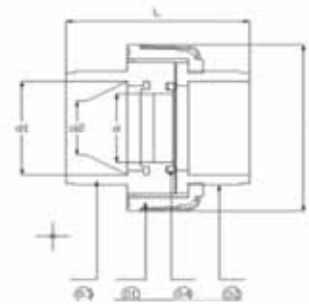
- 內牙管帽 Female Cap (NPT)
(848)



Nominal Size	Socket Type		Structural Diameter	
	D	M (NPT)	Z	L
1/2"	21.34	14	24.0	30.5
3/4"	26.67	14	27.0	33.5
1"	33.40	11.5	30.0	37.0

- 由令 / Union

Item : JP-240
 Size : 1/2" ~ 2"
 Joint End : Socket (ANSI/CNS/DIN/JIS)
 Threaded (PT/NPT/BSPF)
 Working Pressure: 150 PSI

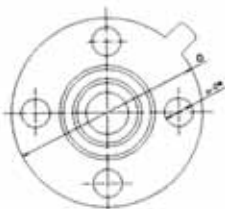
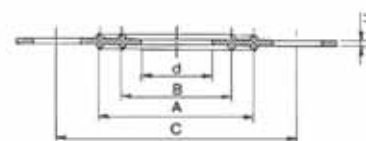


NO.	PART	MATERIAL	Q'TY
1	UNION NUT	UPVC/CPVC/PP	1
2	UNION END	UPVC/CPVC/PP	1
3	BODY	UPVC/CPVC/PP	1
4	ORING	EPDM/VITON	1

SIZE	Nom.	d	d 1				d 2				D	L
			ANSI	DIN	JIS	CNS	ANSI	DIN	JIS	CNS		
DN15(1/2")	15	15	21.54	20.30	22.30	22.40	21.23	20.10	21.70	21.9	53.8	59
DN20(3/4")	20	20	26.87	25.30	26.30	26.40	26.57	25.10	25.70	25.9	64.8	63.3
DN25(1")	25	25	33.65	32.30	32.33	34.50	33.27	32.10	31.67	33.9	76	72.8
DN32(1-1/4")	32	32	42.42	40.30	38.43	42.50	42.04	40.10	37.57	41.9	85.8	78.5
DN40(1-1/2")	40	40	48.56	50.30	48.46	48.60	48.11	50.10	47.54	47.9	91.5	88
DN50(2")	50	50	60.63	63.30	60.56	60.60	60.17	63.10	59.44	59.9	122	99
DN65(2-1/2")	63	63	73.38	75.30	76.60	76.70	72.85	75.10	75.87	75.9		
DN80(3")	75	75	89.31	90.40	89.60	89.70	88.70	90.10	88.83	88.9		
DN100(4")	97	97	114.76	110.4	114.7	115.0	114.1	110.10	113.98	113.8		

- EPDM/VITON/PTFE+EPDM 墊片Gasket

Item : JP-280
 Size : 1/2" ~ 12"
 Joint End: Socket (ANSI/JIS/DIN)
 Working Pressure: 150 PSI



JIS 10K

Nom.	D1	D2	D3	D4	d1	n-Oe
1/2"	26	41	70	93	18	4-15
3/4"	32	47	75	98	22	4-15
1"	38	53	60	123	30	4-19
1-1/4"	50	65	100	133	37	4-19
1-1/2"	54	69	105	138	43	4-19
2"	68	83	120	153	54	4-19
2-1/2"	86	101	140	173	69	4-19
3"	98	112	150	183	80	8-19
4"	120	138	175	208	102	8-19
5"	145	166	210	248	127	8-23
6"	168	190	240	278	150	8-23
8"	216	190	240	278	150	8-23
10"	270	306	355	398	249	12-25
12"	324	352	400	443	300	16-25

ANSI#150LB

Nom.	D1	D2	D3	D4	d1	n-Oe
1/2"	25.40	40.64	60.45	86.36	17.78	4-16
3/4"	33.02	48.26	70.10	96.52	22.86	4-16
1"	38.10	53.34	79.50	106.7	30.48	4-16
1-1/4"	50.80	66.04	88.90	114.3	38.10	4-16
1-1/2"	53.34	68.55	98.55	124.4	43.18	4-16
2"	68.58	83.82	120.7	149.9	53.34	4-19
2-1/2"	86.36	101.6	139.7	175.2	68.58	4-19
3"	99.06	111.8	152.4	187.9	81.28	4-19
4"	119.4	137.2	190.5	226.1	101.6	8-19
6"	167.6	190.5	241.3	276.9	148.9	8-22
8"	215.9	246.4	298.5	340.4	198.1	8-22
10"	269.2	307.3	361.9	403.9	249.9	12-25
12"	325.2	353.1	431.8	480.1	299.7	12-25

Unit: mm

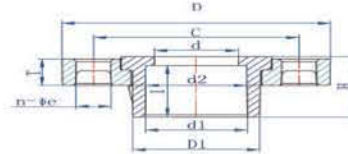
● 活套法蘭 / Universal Van Stone Flange

Item : JP-272

Size : 1/2" ~ 6"

Joint End: Socket (ANSI/JIS/DIN)

Working Pressure: 150 PSI



Unit: mm



SIZE	Nom.	FLANGE		d	d1	C	H	T	n-Øe	APPROX. WE. (g)
		D								
1/2"		94.5		15.0	21.54	70.0	28.5	15.0	4-15	112
3/4"		104		21.5	26.87	73.0	30.0	15.5	4-15	148
1"		118		25.0	33.65	85.0	33.5	16.0	4-16	190
1 1/4"		139		32.0	42.42	100.0	38.5	16.5	4-16	275
1 1/2"		150		40.5	48.56	105.0	42.0	18.0	4-19	360
2"		165		50.0	60.63	125.0	46.5	20.0	4-19	485
2 1/2"		185		65.2	73.38	142.2	53.0	22.0	4-19	668
3"		202		80.5	89.31	157.0	56.25	22.8	8-19	785
4"		230		108.0	114.76	185.0	67.0	23.5	8-19	1050
6"		288		150.0	168.83	242.0	86.0	26.0	8-23	1865

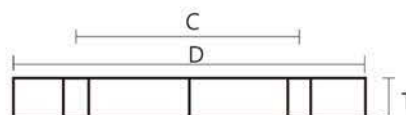
● 盲法蘭 Blind Flange

Item : JP-262B

Size : 1/2" ~ 6"

Joint End: Socket (ANSI/JIS/DIN)

Working Pressure: 150 PSI



Unit: mm



SIZE	Nom.	φ D	φ C	T	n-Øe	Approx. Wt. (g)
1/2"		94.5	70.0	14.0	4-15	112
3/4"		104	73.0	15.0	4-15	148
1"		118	85.0	16.0	4-16	210
1 1/4"		139	100.0	16.0	4-16	310
1 1/2"		150	105.0	17.5	4-19	400
2"		165	125.0	19.5	4-19	540
2 1/2"		185	142.2	21.0	4-19	770
3"		202	157.0	21.5	8-19	860
4"		230	185.0	22.0	8-19	1120
6"		288	242	29.0	8-23	1990