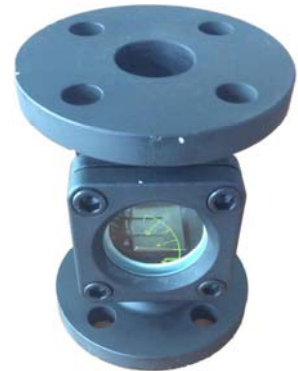
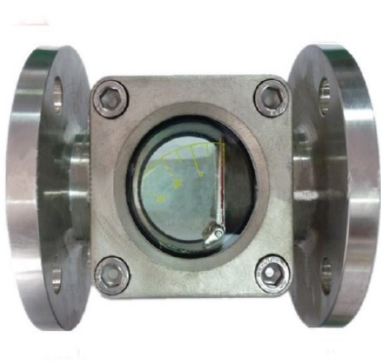


FLAP TYPE SIGTH FLOW INDICATOR

FFLT Series...



- For Visible Check of Fluid Flow
- Horizontal and Vertical Installation

SPECIFICATIONS :

Type	Double Window Flap Type
Size Range	DN15 mm to DN100 mm (1/2" to 4")
Body and Flapper	304SS, 316SS or Carbon Steel
Sealing Gasket	NBR, PTFE
Glass	Standard : Tempered Glass Option : Borosilicate
End Connection	Female Threaded : BSP, NPT Flange : ANSI, JIS, DIN
Max. Medium Temperature	NBR Sealing Gasket : 100 °C PTFE Sealing Gasket : 250 °C
Max. Working Pressure	16 Bar / 232 PSI

Size (inch)	Type	Overall Length L (mm)
1/2"	FFLT-15	140
3/4"	FFLT-20	150
1"	FFLT-25	160
1 1/4"	FFLT-32	180
1 1/2"	FFLT-40	200
2"	FFLT-50	230

Dimension :

